



# MRX920™

MOBILE DATA COLLECTOR



MRX920™ Mobile Data Collector

Neptune's MRX920™ is a rugged, portable, easy-to-use automatic meter reading device. Weighing only five pounds, the MRX920 is small enough to fit in any vehicle and comes with a carrying case or optional mobile office unit to be stowed or fastened in a location of your choice. Within minutes, the MRX920 can be securely placed in any vehicle and powered via the vehicle power source.

Data transmitted by R900® radio frequency (RF) meter interface units (MIUs) is received and stored by the MRX920 mobile data collector. Information can be quickly uploaded to Neptune's host meter reading software at the utility office. The N\_SIGHT™ R900® host software transfers the customer information to the customer information system (CIS) to generate customer bills. The MRX920 unit also captures the advanced features of the E-Coder® solid state absolute encoder register connected to an R900 MIU\*. These features include leak, tamper, and reverse flow indication.

The MX900 mobile data collection software runs on the user's laptop computer and is designed to support maximum efficiency. This software supports a USB connection or a wireless connection via WiFi to the MRX920 receiver and utilizes menu-driven commands to allow the user to effortlessly control all aspects of the meter reading process. No operator intervention is necessary once data collection has started. At any time, the operator can view either read or unread accounts with the touch of a button.

### UTILITY ADVANTAGES

The MRX920 unit provides the meter reading industry with many advantages over other existing AMR systems:

- Industry-leading performance in a compact and affordable package
- Improves meter reading accuracy
- Addresses "hard-to-read" meters
- Increases meter reader safety
- Reduces man-hours needed to collect and process meter reading information
- Supports any size utility
- Portable and easy to set up

### KEY FEATURES

- USB or wireless connection to the receiver via WiFi
- RF test application receives meter data information without loading a route
- Digital signal processing for improved meter reading throughput
- Portable for use in any vehicle
- Low power consumption (< 1A) allows for multiple devices to be connected in the same vehicle
- Intuitive graphical user interface
- Supports E-CoderPLUS advanced features\*\*
- Supported by a courteous and knowledgeable Customer Support Center
- GIS meter location mapping\*\*\*
- GPS vehicle location tracking\*\*\*
- Wireless loading/unloading of routes

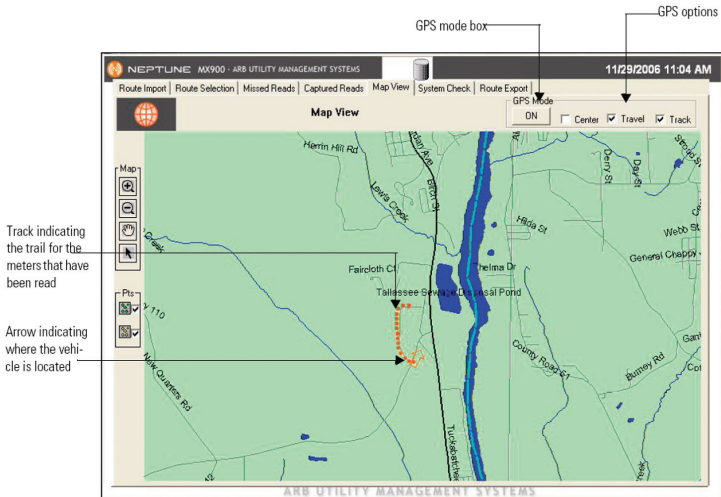
### KEY BENEFITS

- Reads up to eight meters simultaneously and can process 70 unique meter readings per second
- Maximizes meter reading success rates and overall field and office efficiency
- Reduces potential liability to utility through improved meter reader safety
- Does not require a special or customized vehicle
- Operates from standard 12V DC vehicle power source (i.e., cigarette lighter)
- Will support leak detection, tamper detection, and reverse flow indication
- Courteous, prompt, and conscientious Support Specialists available if needed

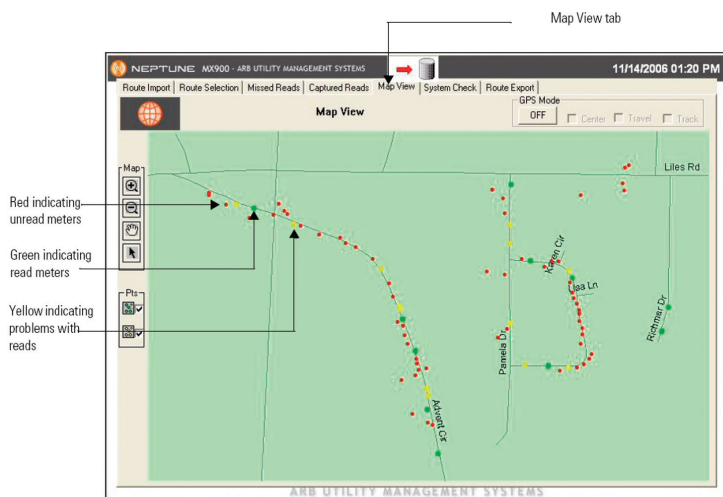
\* When connected to second generation R900 or later.

\*\* Indication of E-Coder

\*\*\*GIS mapping requires optional maps software package. GPS requires GPS capable laptop or USB-connected receiver.



MX900 software is designed to significantly reduce the time required to collect and process meter reading data while increasing meter reader safety and efficiency. The mobile data collection software provides an optional GPS mapping view. The map view allows the operator to monitor route completion by visually determining unread accounts which are represented as colored objects on the map. The operator can stop along the route anytime it is safe to do so and monitors each route loaded into the software. As an added feature, the MX900 also allows the operator to view special conditions that may exist in the route. Conditions such as high/low alarms and tamper alarms are also visible to the operator. For those utilities with Neptune E-Coder-equipped meters, value-added warning flags such as leak detection are also available. This optional mapping package can be ordered with or added to any existing MRX920 mobile data collector. Adding the optional mapping solution could not be easier, as no additional hardware is required.



**SPECIFICATIONS**

- Electrical Specifications:
  - Power consumption: < 1A
  - Power supply: 12V DC via vehicle power source adapter

- In order to adequately run the MX900 software, Neptune recommends the following minimum specifications:

- Operating System

Operating System Version	Operating System Type	32/64 Bit
Windows® XP	Professional	32
Windows® Vista	Business	32
Windows® 7	Professional	32
Windows® 7	Home Premium	64

- Processor – Intel Pentium processor 1.7 GHz
- Memory – 1 GB
- Communication
  - Internal 802.11 b/g wireless LAN
  - Windows Wireless Connection Manager (if WiFi connection to the receiver is desired)
- USB 2.0
- GPS receiver (mapping package is optional)

The MRX920 is an in-vehicle mobile data collector which is designed to be occasionally used in bumpy terrain found in rural meter reading routes. This needs to be taken into consideration when choosing a laptop. Should your utility operate the MRX920 in bumpy conditions or should you require a display rated for outdoor visibility, Neptune recommends considering a ruggedized laptop such as a Panasonic Toughbook® or equivalent.

- Environmental Conditions:

- Operating temperature: 32° to 122° F (0° to 50° C)
- Storage temperature: -40° to 185° F (-40° to 85° C)
- Operating humidity: 5 to 95% non-condensing relative humidity

- Physical Specifications

- Shipping weight: ~5 lbs

Neptune Technology Group Inc.  
1600 Alabama Highway 229  
Tallahassee, AL 36078  
USA  
Tel: (800) 633-8754  
Fax: (334) 283-7293

Neptune Technology Group (Canada) Ltd.  
7275 West Credit Avenue  
Mississauga, Ontario  
L5N 5M9  
Canada  
Tel: (905) 858-4211  
Fax: (905) 858-0428

Neptune Technology Group Inc.  
Ejército Nacional No. 418  
Piso 12, Desp. 1201-1202  
Col. Chapultepec Morales  
Delegación Miguel Hidalgo  
11570 México, Distrito Federal  
Tel: (525) 55203 5294 / (525) 55203 5708  
Fax: (525) 55203 6503

